



Euroopa Maaelu Arengu  
Põllumajandusfond:  
Euroopa investeeringud  
maapiirkondadesse



## WHAT TO DO WITH A 45 KG CALF ?

FOKKE KOMRIJ

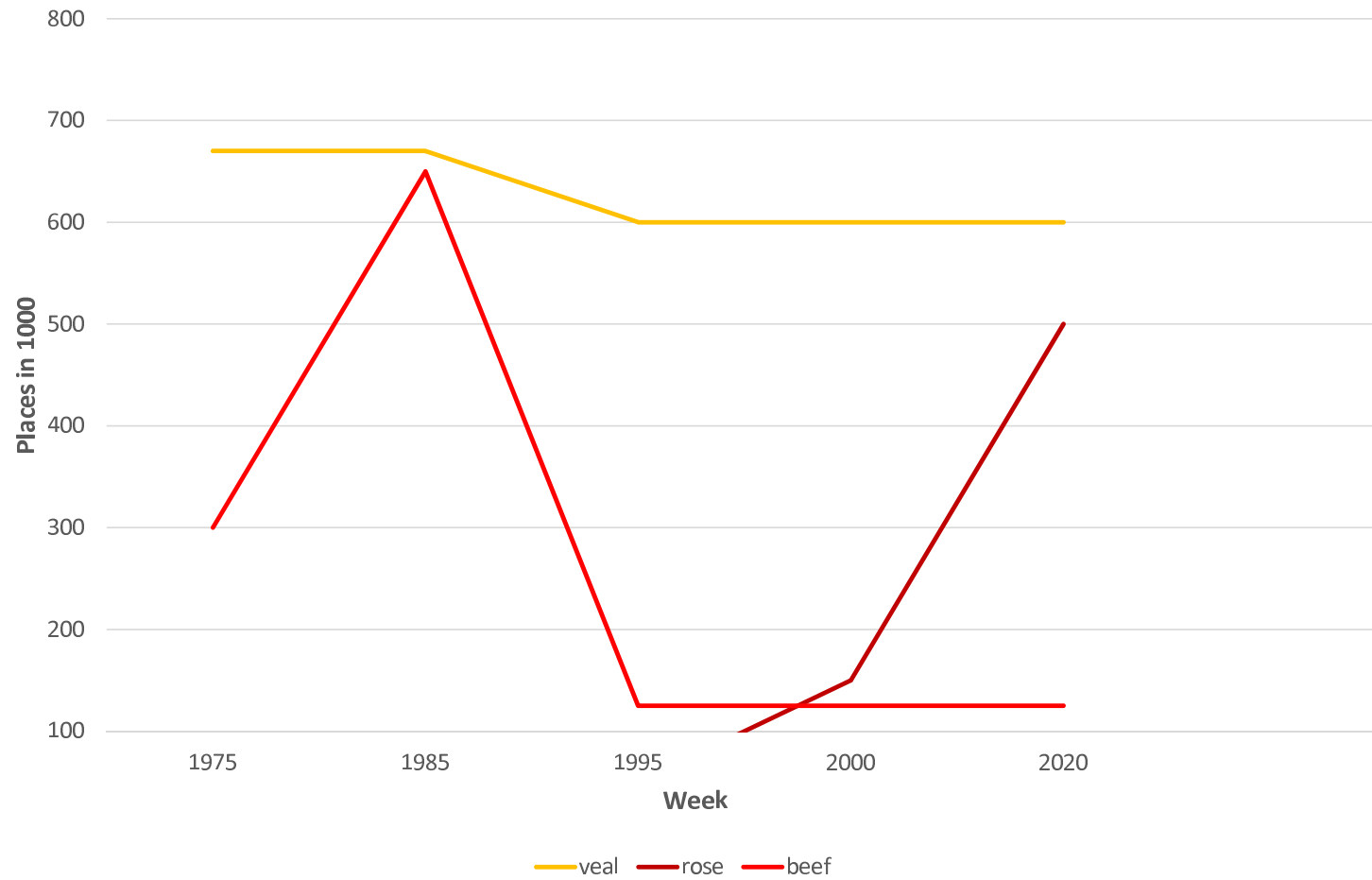
 **DENKAVIT**

## WHAT IS BULL FATTENING?

---

- Definition of a bull: A bull is a male animal of the cow family (or some other male animals e.g. elephants / whales)
- Definition of fattening:
  - Causing or tending to cause an increase in body fat
  - That which causes weight gain: usually high calorie food/feed with relatively little nutritive value
  - The fact of eating a lot of food/feed, thereby getting fatter.
- Feeding a bull calf with high quality and highly nutritional feed, and so creating an optimal growth to obtain an high quality meat.
- These bull(s) (calves) can be slaughtered after a certain period of feeding.
- < 8 month veal (calf meat) production; > 8 month (baby) beef production.

# HISTORY OF VEAL / ROSE / BEEF PRODUCTION HOLLAND





## BULL FATTENING (BEEF: SLAUGHTER WEIGHT 350 – 600 KG)

---



## CALF MEAT PRODUCTION IN NETHERLANDS

|                             | 2000<br>PLACES | 2014<br>PLACES | 2020<br>PLACES | 2020<br>YEARLY<br>PRODUCTION |
|-----------------------------|----------------|----------------|----------------|------------------------------|
| VEAL 6                      | 635.000        | 565.000        | 565.000        | 1.000.000                    |
| ROSÉ YOUNG<br>< 8 / OLD > 8 | 145.000        | 350.000        | 350.000        | 520.000                      |





# IMPORT CALVES // EXPORT MEAT



750.000 nuka's



1.400.000 meat calves carcass eq.



**DENKAVIT**

# DENKAVIT RESEARCH FARM

---





## VEAL PRODUCTION

**DENKAVIT**  
GROWING TOGETHER



## VEAL PRODUCTION: FROM 42 KG TO 157 KG (SLAUGHTER WEIGHT)

---

**250 kg**



**340 kg**



**5 – 10 %**



## VEAL PRODUCTION: FROM 42 KG TO 157 KG (SLAUGHTER WEIGHT)

---





# VEAL HOUSING / KITCHEN



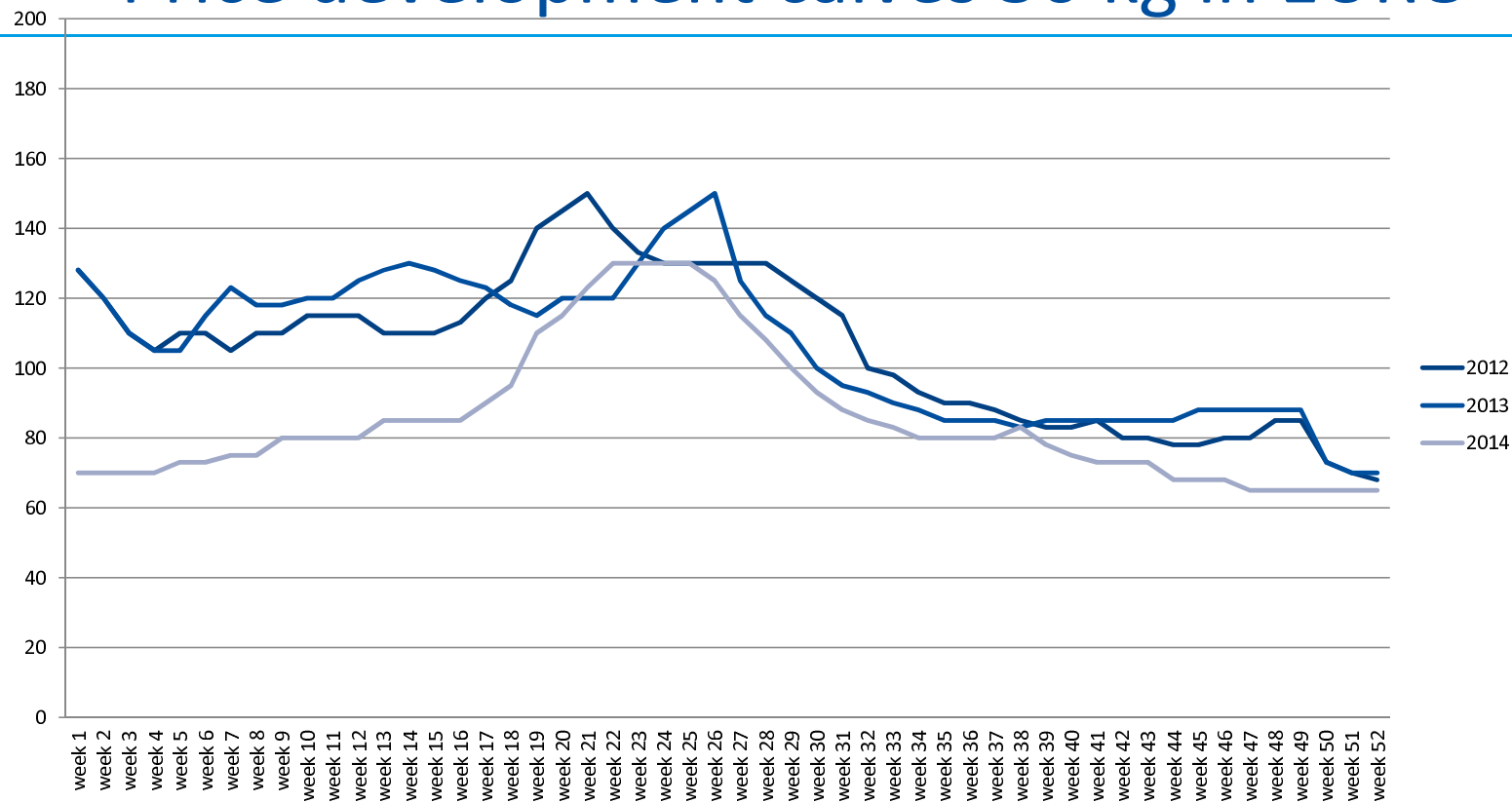




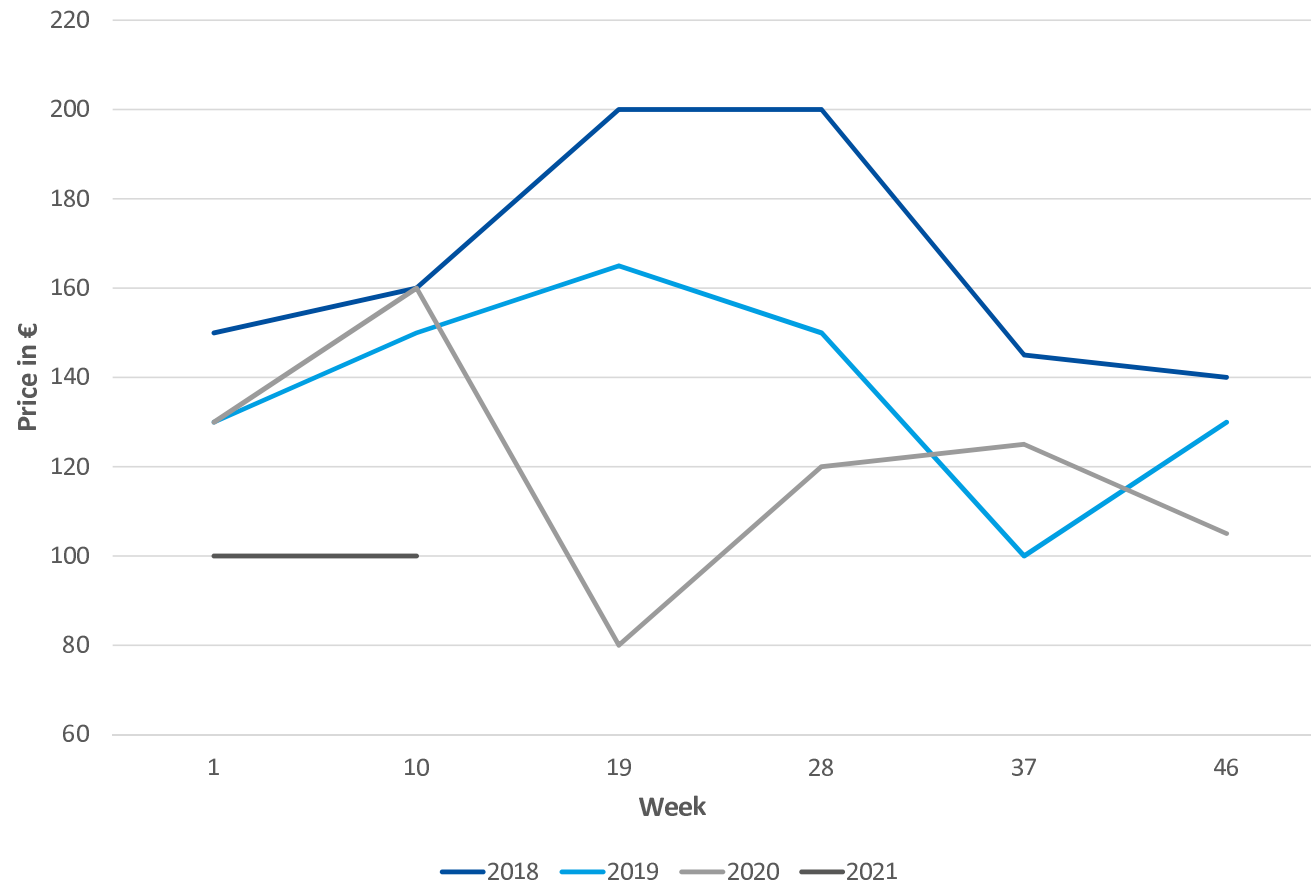
## PRODUCTION OF ROSE MEAT

**DENKAVIT**  
GROWING TOGETHER

# Price development calves 50 kg in EURO



## PRICE DEVELOPMENT CALVES 50 KG IN EURO





## CALF COLLECTING PLACES

---



## FEED COSTS YOUNG ROSE 178 KG (330 KG LIFE)

---

- Milk 25 kg á € 1,70/kg = € 42,5
- 1000 kg 36% DS mais silage á € 50, =
- Starter feed a € 32,=/100 kg 135 kg = € 43,50
- Fattening feed a € 28,=/100 kg 610 kg = € 171,=
- Chopped straw
- Old rose 300 kg more concentrates



## FEEDING ROSÉ CALVES

---

|             | Intake d.m per kg l.w. | Energy / kg d.m. VEVI | Protein / kg d.m. CP / DVE |
|-------------|------------------------|-----------------------|----------------------------|
| 100 kg l.w. | 2,5 kg                 | 1050                  | 180 / 125                  |
| 250 kg l.w. | 2,0 kg                 | 1050                  | 165 / 100                  |





## FEEDING ROSÉ CALVES

---



## FINISHER STABLE HOLLAND

---





## FINISHER STABLE HOLLAND

---



# START STABLE DENMARK





## FINISHER STABLE DENMARK

---





## HEALTH

---

- All in all out
- Antibiotika € 8
- Vaccination € 12,=



## SUSTAINABILITY

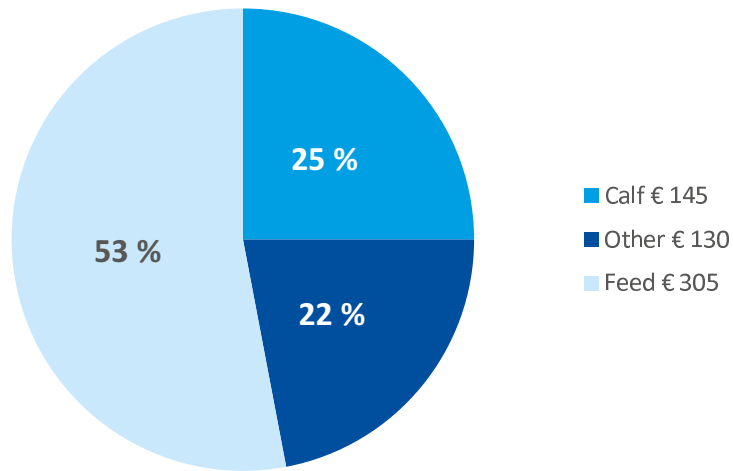
---

- Less use of antibiotics
- Less transport of animals (calves)
- Colostrum calves
- Welfare (floor and feed)



# COST OF CALF MEAT PRODUCTION ROSE 2020 START DELIVERED 2021

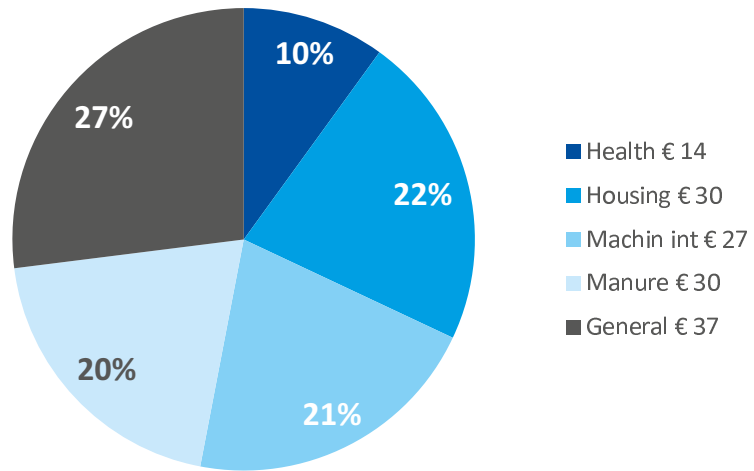
---



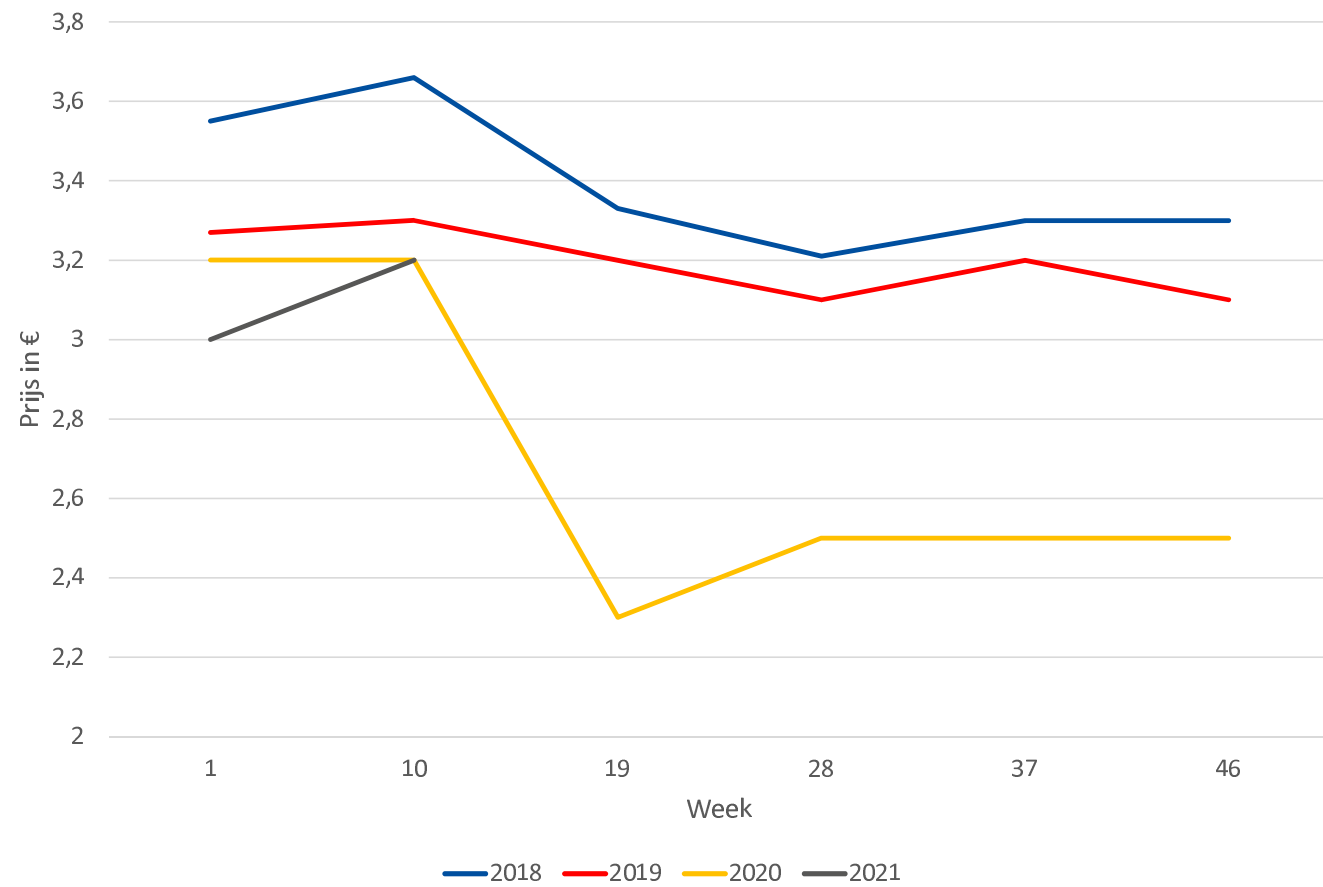


## COST OF CALF MEAT PRODUCTION ROSE 2020 2

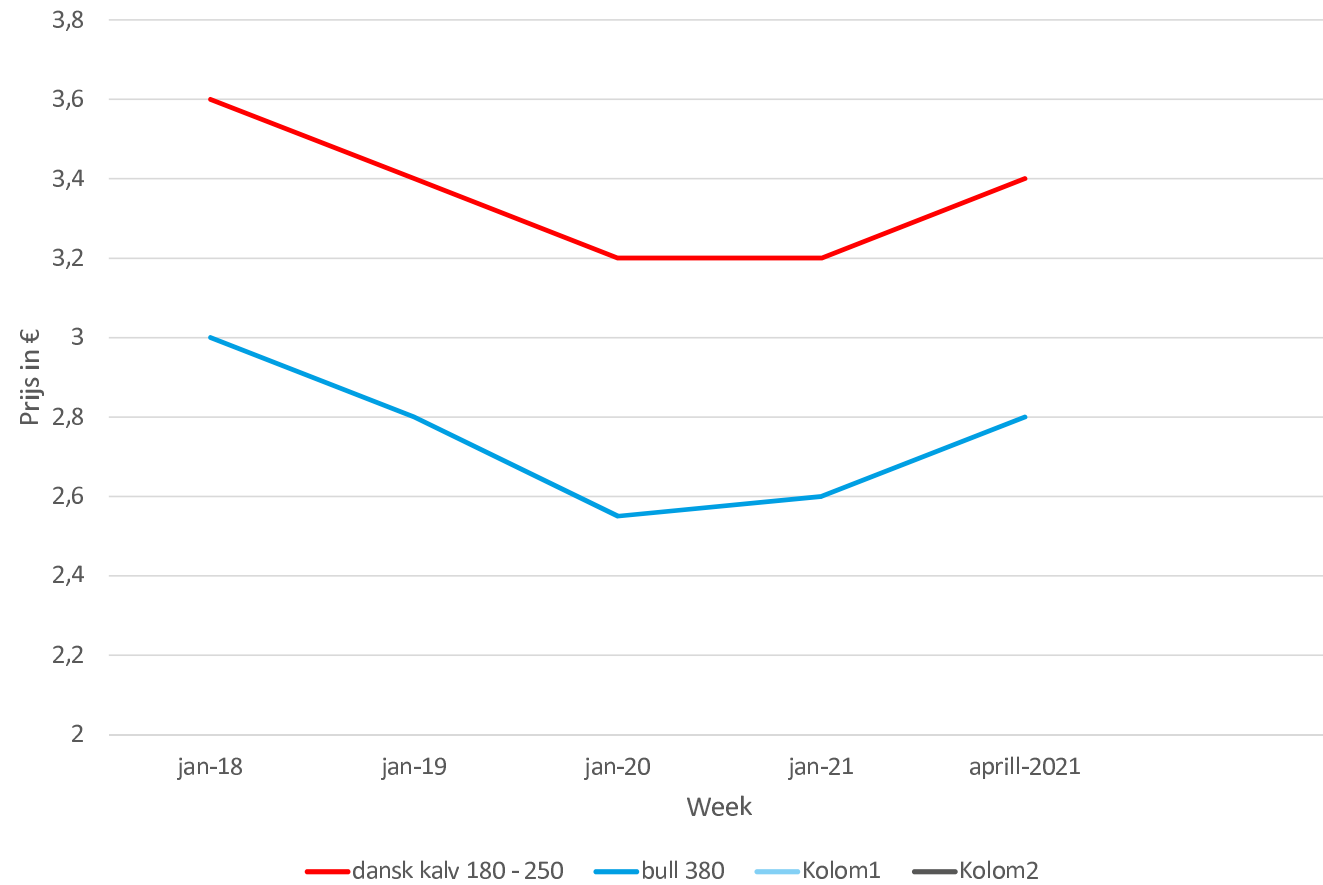
---



## PRICE YOUNG ROSE MEAT (VEAL +/- + € 1 ) IN HOLLAND

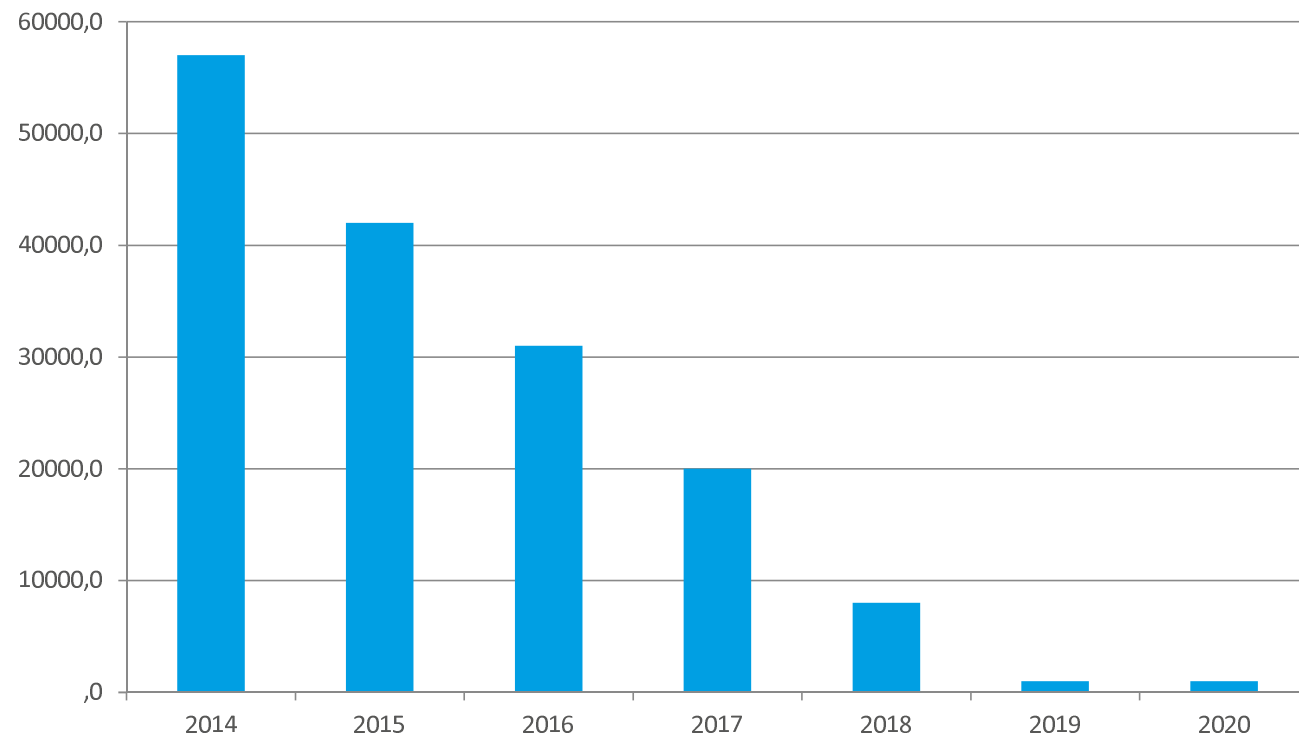


## PRICE ROSE MEAT (DANSK KALV <12 MONTH) AND BEEF > 12 MONTH



## AMOUNT OF "BRUSSEL" SUBSIDIES: NOTHING LEFT

---





## EXAMPLE DELIVERED IN WEEK 6 2021

---

| ALL IN EURO                     | YOUNG ROSÉ |
|---------------------------------|------------|
| Purchase weight                 | 52         |
| Slaughtered weight              | 178        |
| Live weight (aanhouding 54,5 %) | 330        |
| Stal days                       | 225        |
| Growth per day                  | 1,236      |
| Mortality                       | 2,90       |
| Feeding cost per animal         | 308        |
| Feeding costs per kilo growth   | 1,16       |
| Price per kilo                  | 3,12       |
| Purchase price calf             | 145*       |
| Feeding profit per calf         | 102*       |
| other: housing, machinery ;     |            |
| manure: health                  | 130        |
| Saldo per animal (DB)           | -27        |
| Saldo per place                 |            |

## DANSK KALV < 12 MONTH

---

- 180 – 250 kg slaughter weight
- Ad libitum compound feed 1400 kg
- Ad libitum straw
- Small calves € 70,=

## FINNISH BULL FATTENING

---

- Minimum 350 kilo slaughterweight
- Grassilage ad libitum 17 % protein
- Rape meal
- Barley
- Vitamins and minerals
- Small calves € 150 – € 200
- € 3,4 per kg



HOW THE MEAT IS SOLD /  
BRANDED IN THE  
NETHERLANDS AND  
DENMARK.

 **DENKAVIT**  
GROWING TOGETHER



## MARKETING MEAT IN SHOPS AND RESTAURANTS IN DK

---



## DUTCH WELFARE MARKETING OF MEAT

---



## FARM SALES TO CONSUMERS IN THE NETHERLANDS

---







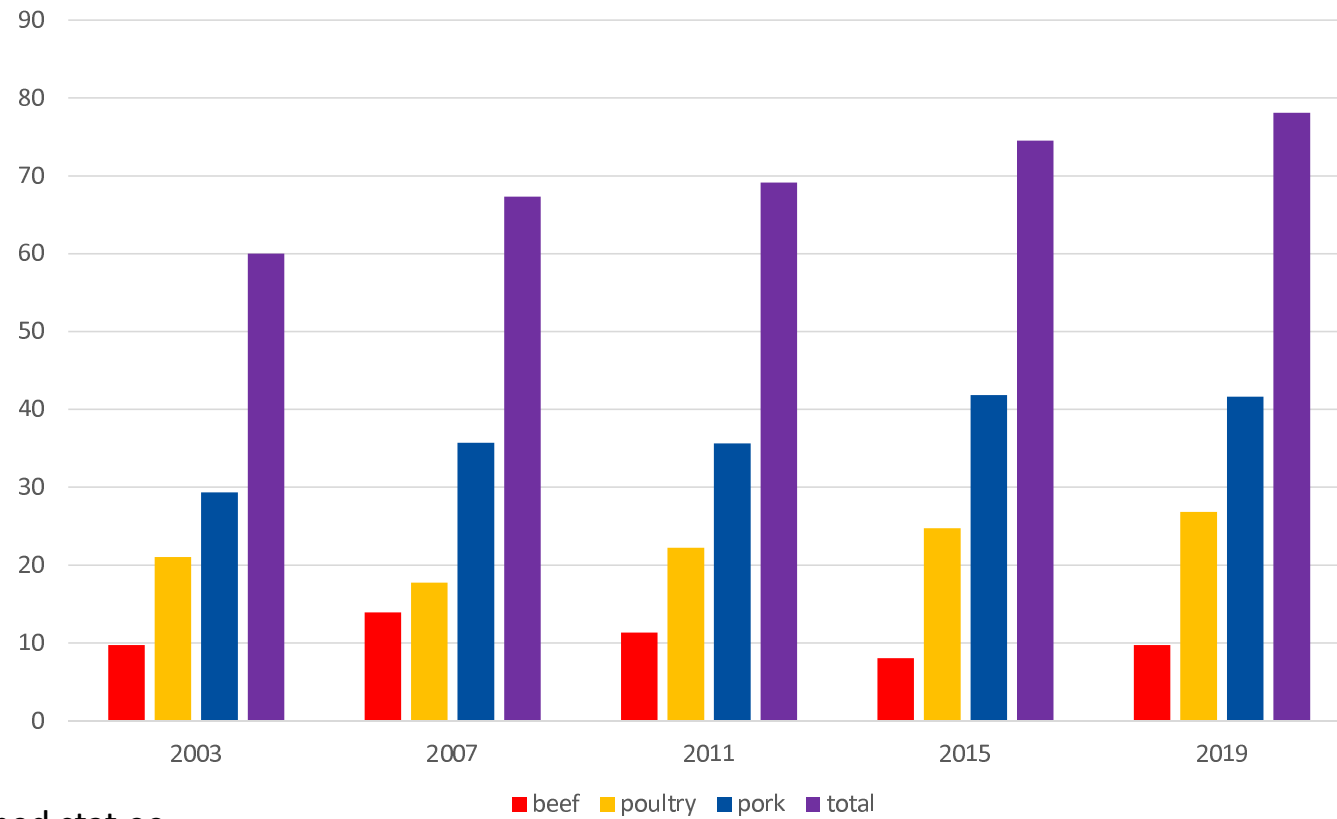
EESTI VASIKA LIHA !

 **DENKAVIT**  
GROWING TOGETHER



# MEAT CONSUMPTION ESTONIA 2003 – 2019

Grafiektitel



Source: andmed.stat.ee

## DISCUSSION

---

- Intensive like rosé Netherlands or Dansk kalv Denmark. Need for higher price of the meat
- Extensive like Finland beef production.
- Consumer (restaurants / shops) / retail / meat packer / slaughterhouse / farmer
- Regisseur
- Investment
- Branding meat



AITÄH

 **DENKAVIT**  
GROWING TOGETHER